

▶ WATERFLUX Product Portfolio



WATERFLUX 3070 C
battery powered
version



WATERFLUX 3070 C
battery powered
IP68 compact version



KGA 42
Datalogger and
GSM module



WATERFLUX 3100 C
Mains powered
standard version



WATERFLUX 3300 C
Mains powered
universal version

All versions can also be delivered as a remote version (converter and sensor separated).

www.krohne.com



www.krohne.com/waterflux
info@krohne.de
Tel.: +49 203 301 0
Fax: +49 203 301 103 89
47058 Duisburg, Germany
Ludwig-Krohne-Str. 5
KROHNE Messtechnik GmbH
Head office
Contact

KROHNE

▶ achieve more

▶ WATERFLUX – More independence in water measurement



▶ WATERFLUX – More independence in water measurement

WATERFLUX, the new electromagnetic water meter, was specifically designed for applications in the water and waste water industry.

Large measuring ranges and even low flow volumes can be reliably measured and superior long-term stability and repeatability are guaranteed.

But the real advantages lie in the elimination of the inlet and outlet runs, the non-wearing measuring tube and the direct, subsoil installation. WATERFLUX is setting new standards and becoming a true alternative in water measurement in the process.

▶ Less is more

Flow measurement without inlet and outlet runs

- Flow profile-optimised measuring tube without moving parts: no need for strainers, filters or rectifiers
- No need for inlet and outlet runs
- Negligible, limited pressure loss
- Bi-directional measurement of very small and very large volumes of water

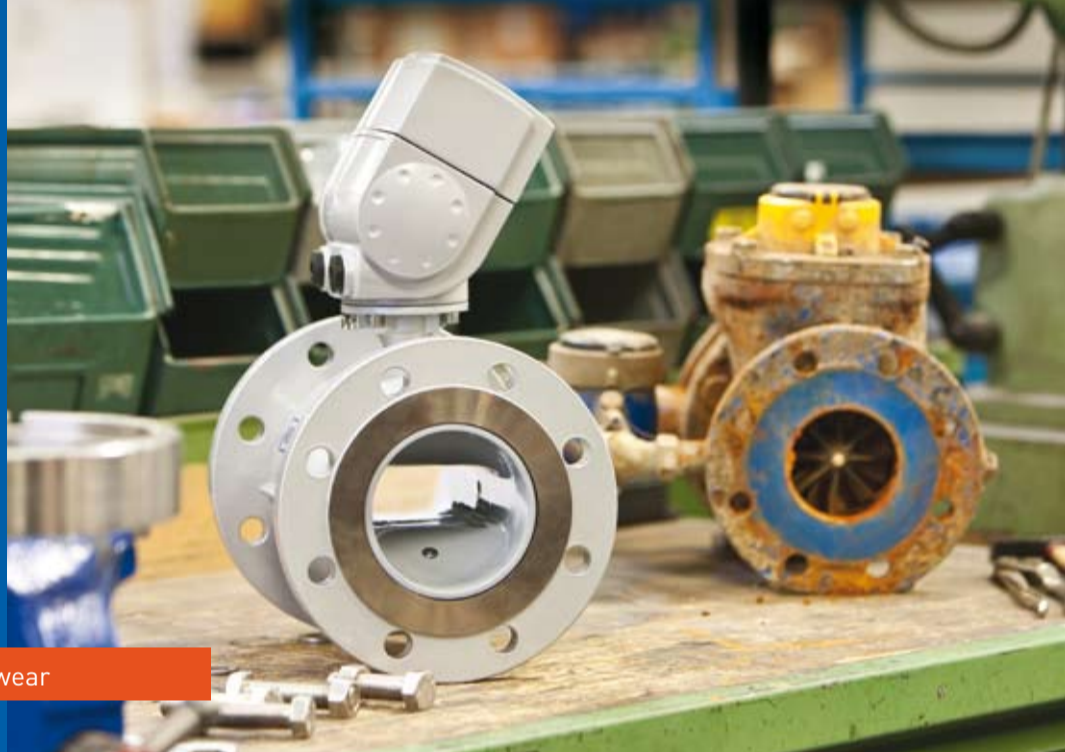


Further information: www.krohne.com/inlets

▶ New for old

Replacement for mechanical bulk water meters

- Maintenance-free, precise measurement of both minimum and maximum flows
- Long service life of 25 years – over several calibration periods (if required by national authorisation)
- Non-wearing, rugged measuring tube with Rilsan® liner – also for use with drinking water applications
- Not sensitive to spinning or jetting



Further information: www.krohne.com/wear

▶ Deep and active

Direct subsoil installation of water meters

- A special non-corrosive subsoil coating enables the installation directly in the ground (not with custody transfer applications)
- No need for cost-intensive measuring chambers
- Above ground recording of measuring data with the battery-powered signal converter or GSM transfer (SMS, GPRS)



Further information: www.krohne.com/subsoil

▶ So far and yet so close

GSM/GPRS remote measurement data transmission using KGA42

- IP68 data logger with stronger transmission power for installations in manholes
- PC- as well as server based visualization platform for data storage and analysis of all measuring data
- visualization of e.g. consumptions, min-/max as well as nighttime flowrates



OPTIONAL

Further information: www.krohne.com/communication