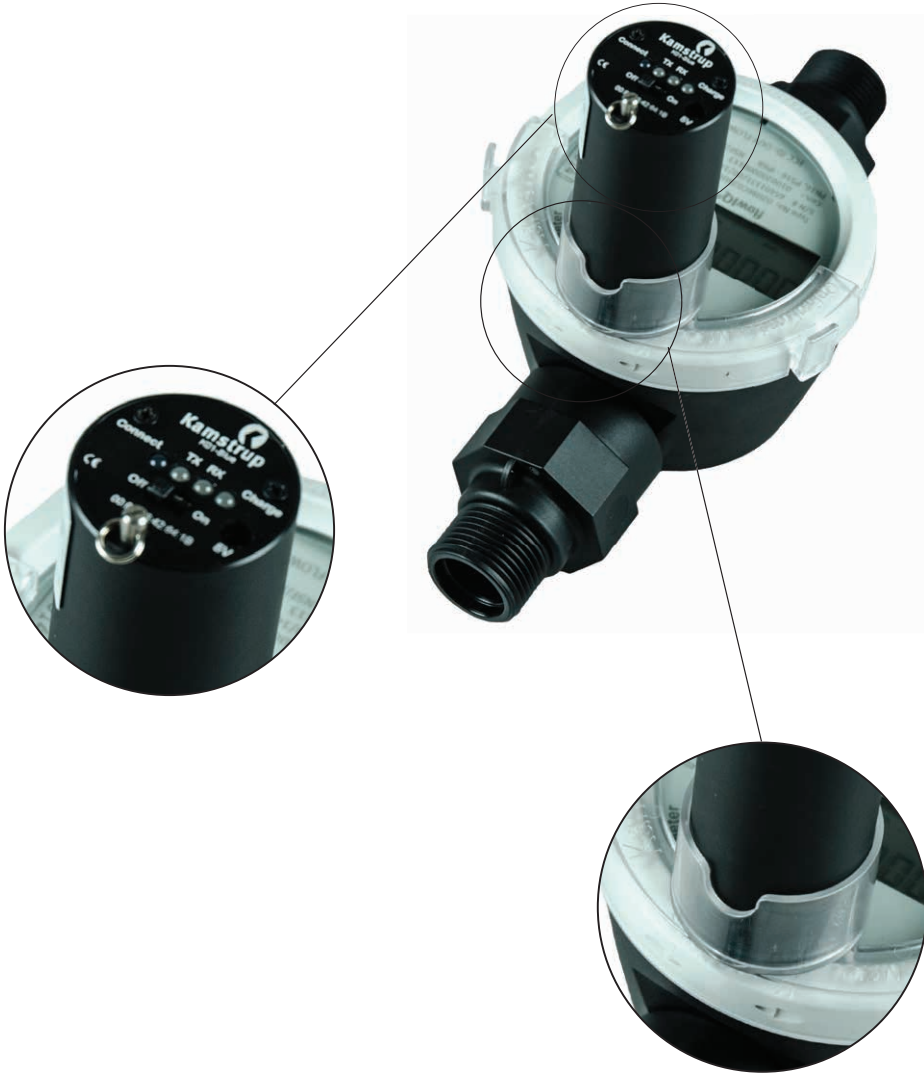


Installation



Kamstrup Water Metering L.L.C.
1040 Crown Pointe Pkwy
Atlanta, GA 30338
Tel: +1 (404) 835-6716
Fax: +1 (687) 904-9714
55121621_A1_US_11.2014



For further information
please see
www.kamstrup.com

**Bluetooth compatible
optical head**
User Guide



Application

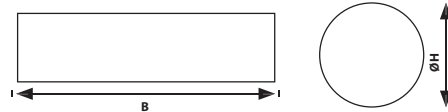
Bluetooth optical head is a device that enables the user to read logged data in meters and via a smartphone and REAdy App to illustrate the consumption in columns.



Electrical data

- Optical interface pursuant to EN62056
- Transfer speed of 300...38,400 baud
- Bluetooth 2.0 interface, class 2
- Range of up to 50 m
- Electricity supply via a lithium-manganese battery with 0.7 AH capacity (operating time of approx. 12 hours)
- Low battery indication
- Typical charging time: 2.5 hours

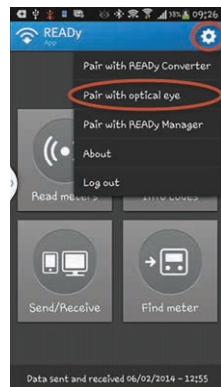
Mechanical data



- Width: B 2.76"
- Diameter: HØ 1.26"
- Weight: 2.3 oz
- Magnetic retention force: ~ 15 N
- Infrared daylight filter
- Wrist strap eyelet
- Casing material: Delrin (POM), black
- Protection class: IP40
- Markings/standards
- FCC ID: RFR-B2029
- RoHs
- FCC part 15B

How to connect

- Turn Bluetooth optical head on
- Wait until LEDs stop flashing
- Open settings in REAdy App
- Choose "Pair with optical head"
- Select the correct unit
- The blue LED turns on when connection is made.



Suitcase



Ordering no: 6696 01xx